

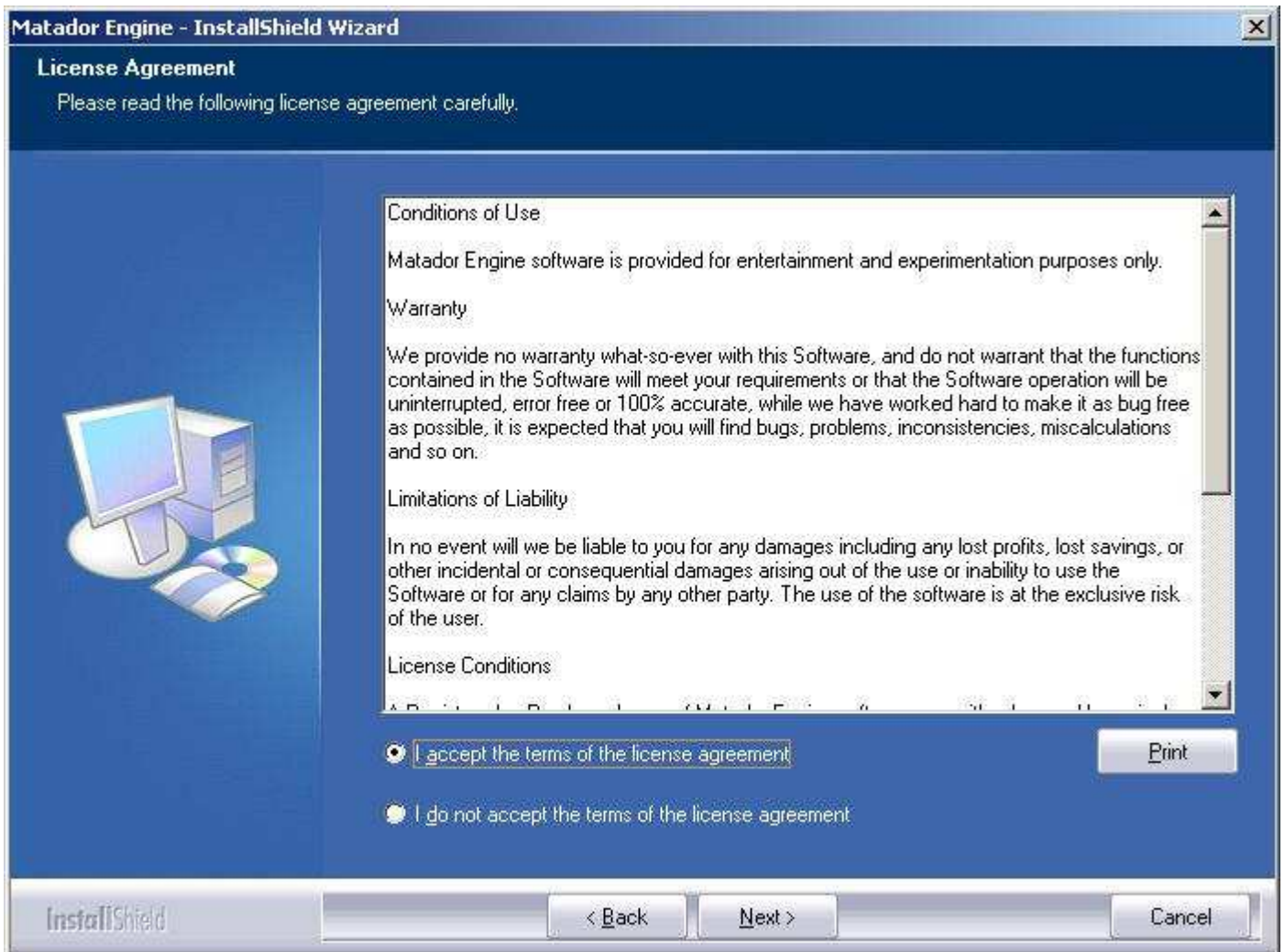
## Matador Engine Installation Manual

1.- Download Matador Engine Installer from:

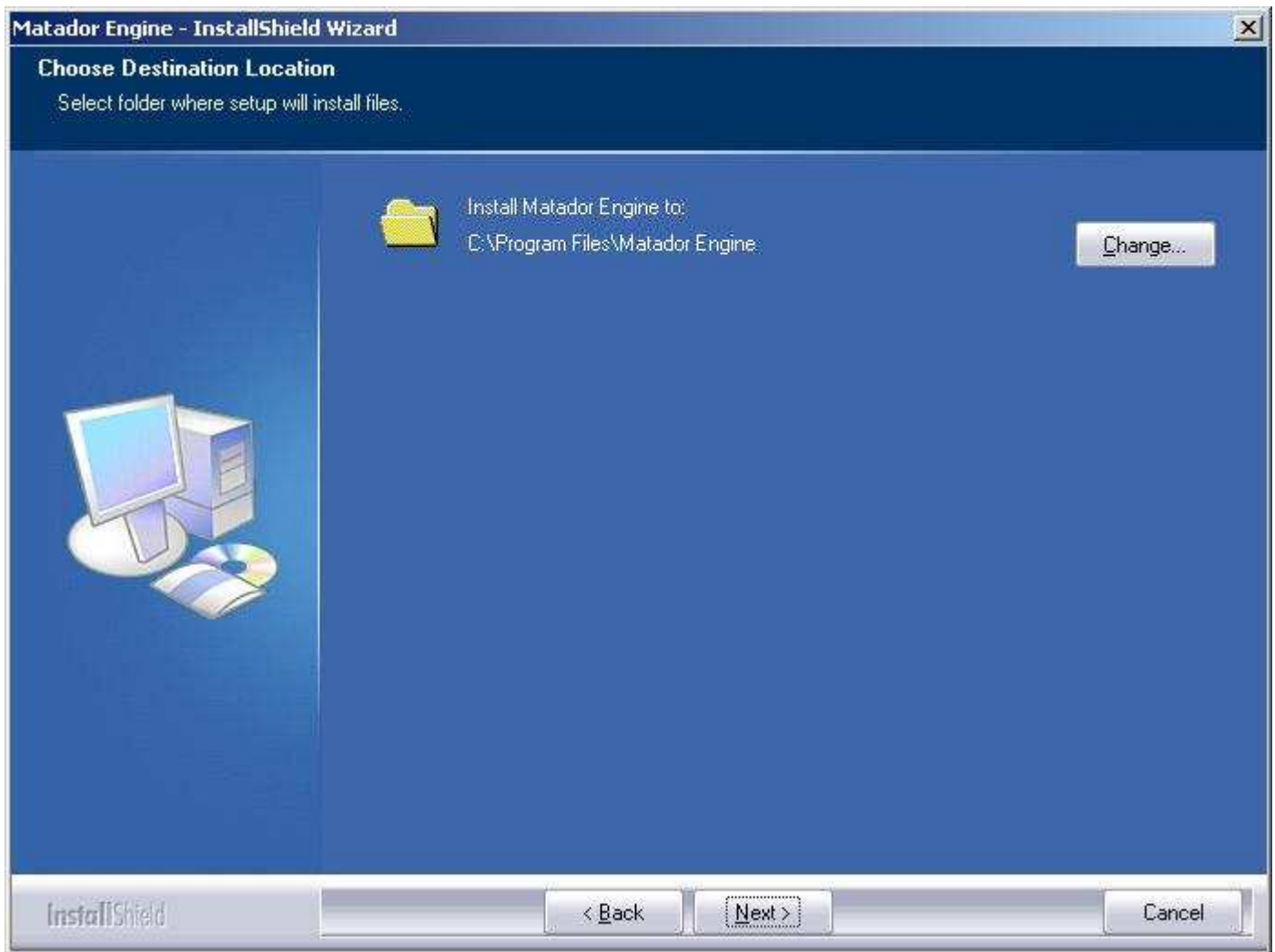
[http://www.matadorengine.com/download/Matador\\_Engine\\_Installer.exe](http://www.matadorengine.com/download/Matador_Engine_Installer.exe)

2.- Execute Matador Engine Installer.

3.- Accept the terms of the license agreement.

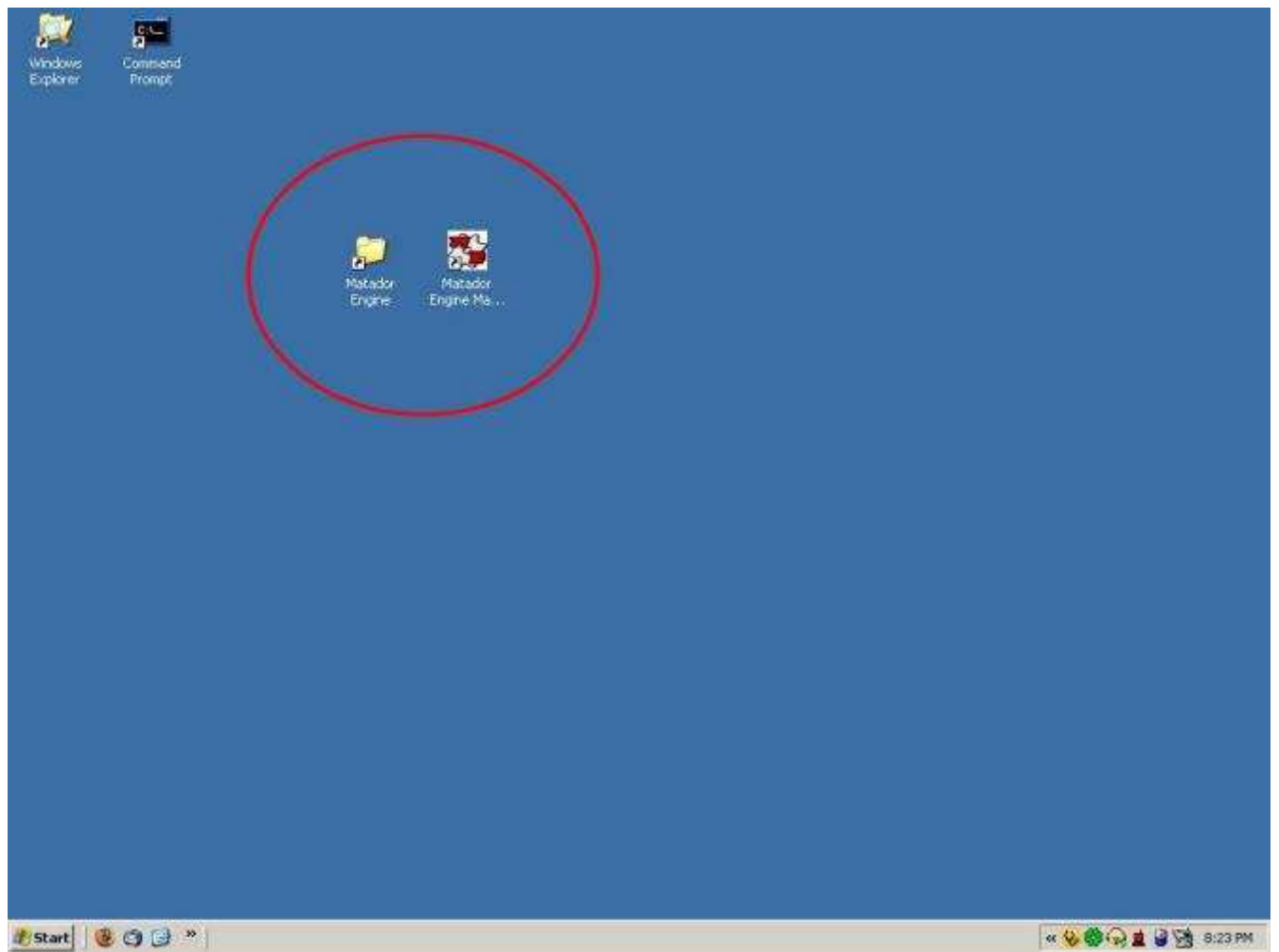


4.- Select the folder where you want to install Matador Engine software.



5.- The installer will copy all files and drivers to the selected destination.

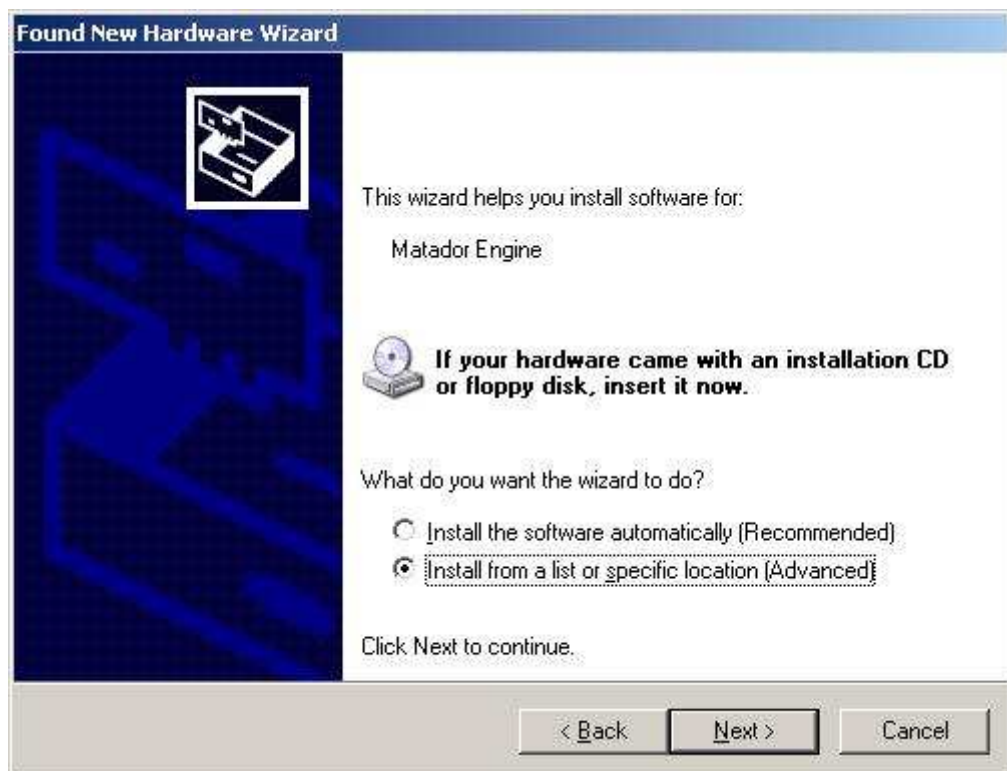
6.- When the installer finishes there will be two new icons in your desktop. One is a shortcut to the folder in which is installed Matador Engine software and the other one is a shortcut to Matador Engine Maintenance Tool.



7.- Now you must connect Matador Engine box to one free USB port on your computer.



8.- The computer will detect the new hardware and will ask for Matador Engine drivers. Select “No, no this time” and “Install from a list or specific location (Advanced)”.



9.- Now select the folder in which you installed Matador Engine software and select the folder that contains “Matador Engine FTDI drivers”, if you selected the default installation folder the complete path for the drivers will be:

C:\Program Files\Matador Engine\Matador Engine\Matador Engine FTDI drivers



10 .- Click “Continue Anyway” when this message appears:



11.- When all is installed click Finish to close the wizard.

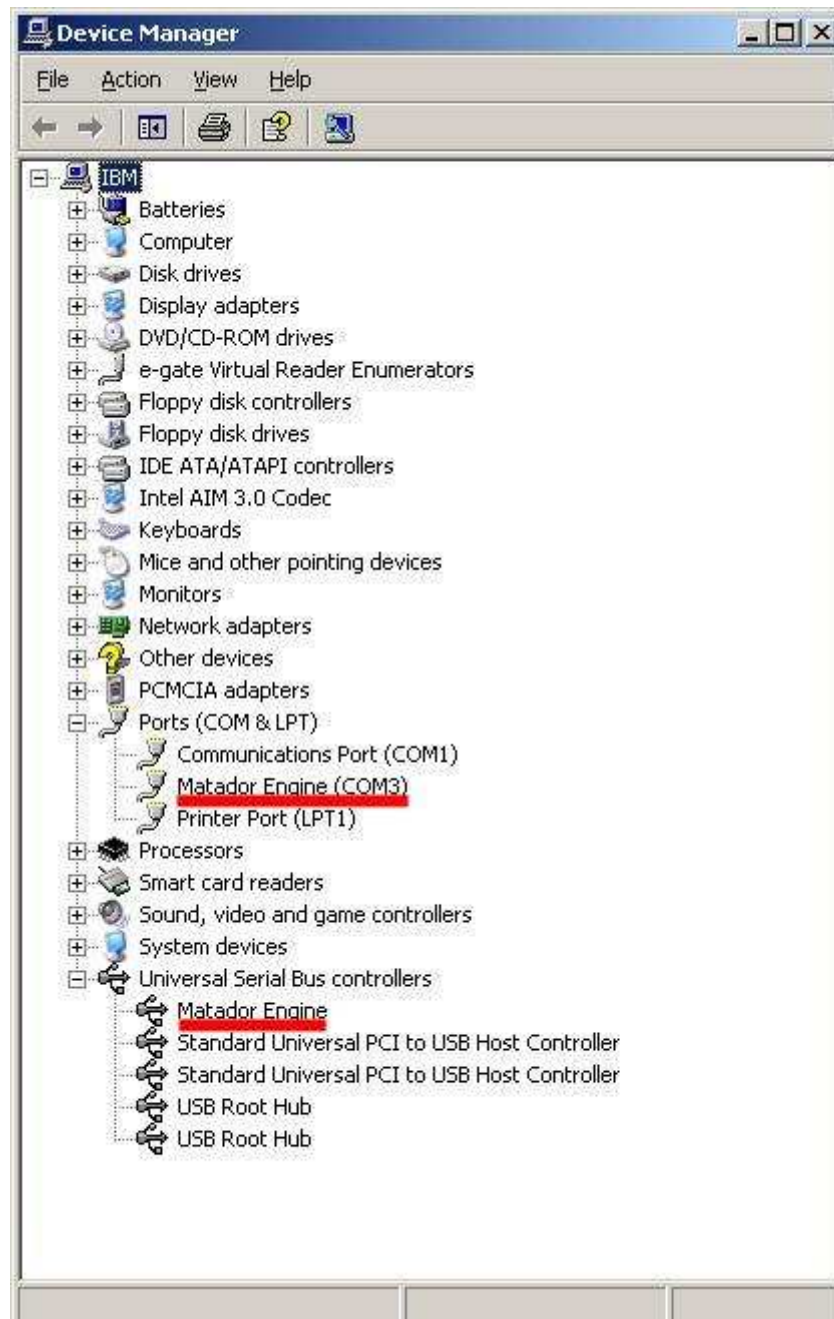


12.- After a few seconds a new USB Serial Port will be detected:



13.- Repeat steps 8 to 11 to install the drivers for the Matador Engine USB Serial Port.

14.- If you want to test the installation of Matador Engine hardware you can open the “Device Manager” window and check that under Universal Serial Bus controllers the Matador Engine device is present and under Ports (COM & LPT) the Matador Engine COM is present.



15.- Start Matador Engine Maintenance Tool, this software will update the box kernel with the latest version available and will flash all available modules into your box.

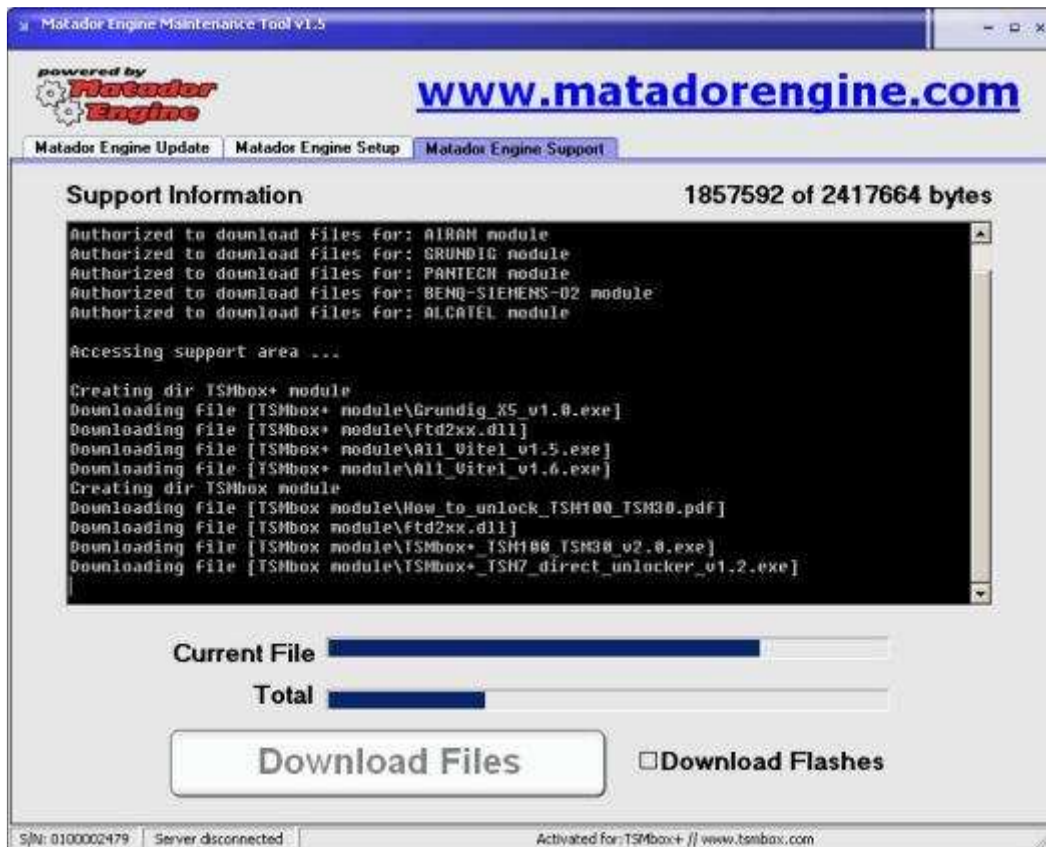


HINT: If the server don't flash your box with any module this means that your box is not activated.

Please ask your reseller to activate your box as soon as possible.

16.- When all modules are flashed into your box, click on the tab "Matador Engine Support". Here you can download all software just by pressing the button "Download Files", and all software will be downloaded to your computer automatically.





When there are new files available on support area (new software, flash files, etc...) by just clicking on "Download Files" button all new files will be downloaded automatically to your computer.

Matador Engine TEAM! 2007

[www.matadorengine.com](http://www.matadorengine.com)

[www.tsmbox.com](http://www.tsmbox.com)